

Mega Power. Smart Access.

Diesel Generator Set

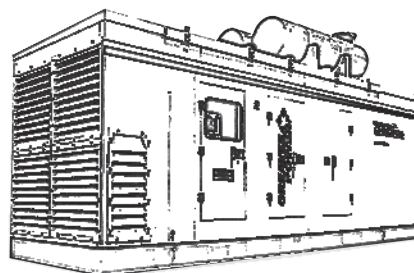
Specifications Sheet - GPW-1010 - 1010 kVA





Greaves Advantage

- Design compliant to IS 3046, IS 10000 & ISO 8528
- Greaves Power provides one-source responsibility for the generating system and accessories
- The generator set and its components are prototype-tested, factory-built and production tested
- 2 years / 5000 hours limited warranty covers all systems and components
- Compact design
- Fast response time
- Easy maintenance



Standard Features

Industrial diesel engine with 24-volt battery charging alternator

Single-bearing alternator

Inbuilt vibration isolators

Dry type air filter

Fuel filter multistage

Starting battery and battery cables

Digital controller

Operations and installation literature

Four point bottom lifting

Generator Specifications:

Genset manufacturer	Greaves Power
Genset rating	Prime Power
Genset output (kVA / kWe)	1010 / 808
Genset model	GPW-1010
Engine rating or max. power at rated RPM in kWm (BHP)	880 (1180)
Engine model	GPW-1010
Engine type	TCAC
No. of cylinders / cylinder arrangement	12 / V-Type
Displacement (L)	31.8
Bore & stroke (mm)	150 x 150
Compression ratio	15.7:1
Rated RPM	1500
Governor: type / DG performance class	Electronic / G3
Frequency regulation, no load to full load	Isochronous
Over speed trip (RPM)	1650
Air cleaner type / qty	Dry / 02

Exhaust System:

Manifold type	Dry
Diameter of exhaust outlet	mm 215
No. of exhaust outlet	2
Max allowable system back pressure	kPa 7.5
EGT after turbine	°C 550

Engine Electrical System:

Charging alternator Voltage / Current (DC)	24 V / 55 Amps
Starter motor rated voltage (DC)	24
Battery voltage (DC) / capacity (AH)	24V, 2X180AH

Fuel System:

Recommended fuel	HSD
Fuel tank capacity (Ltr)* inside canopy	990
*Fuel consumption - LPH at % load	
100%	193.7
75%	146.34
50%	103.25

*Fuel consumption tolerance 5% & diesel density 0.85 kg/l



Diesel Generator Set

Specifications Sheet - GPW-1010 - 1010 kVA

Lubricating Oil System:	
Lube oil sump capacity (Ltrs)	109
Oil change period (Hrs)	500
Oil consumption (% of SFC)	0.15
Oil filter quantity (nos / type)	06 / spin on type
Recommended oil grade	15 W40 Greaves maxtherm API CI4
Oil cooler	Water cooled
Cooling System:	
Cooling system is designed for max ambient temp. Deg. C. at rated load	50
Radiator system capacity, including engine (L)	200
Water pump type	Centrifugal V type belt driven
Alternator Specifications:	
Standard make	Leroy - Somer
Voltage	380 - 440V
Frequency	50Hz
Current at 0.8 PF (Amps)	1406
Type	4 Pole, Rotating field
Exciter type	Brushless (AREP)
Voltage regulator	AVR
Insulation	Class 'H'
Temperature rise	125°C (Class 'H')
Coupling	Flexible disc closed coupled
Voltage regulation: no load to full load	+/-0.5%
One step load acceptable	100% of rating
Unbalance load capability	25% of rated current



Standard Scope of Supply:

Engine

Comes with direct injection, water cooled, 12 - cylinder, V-type, 4 - stroke, rated at 1500 RPM, conforming to ISO 3046/BS 5514. Specifications as follows:

- Mechanical FIP
- Electronic Governor
- Turbo charger, pulse tuned exhaust manifold, stainless steel exhaust flexible connection
- Radiator cooled with charged air cooler
- Plate type lube oil cooler
- Filter - Fuel, Lube oil
- Dry type replaceable paper element air cleaner
- Fly wheel housing and fly wheel to suit single bearing alternator
- Starter motor - Electric battery charging alternator
- First fill lube and coolant

Alternator [LS / STAMFORD / CG]

- Brushless alternator
- Self-excited, self-regulated
- Salient pole evolving field
- Self Ventilated
- Solid State

Instrument Panel

- RAL 9003 White powder coated control panel manufactured with CRCA sheet
- Controller is suitable to display voltage, current, kWe, Frequency, kWh
- Indicating lamps for "Load on" and "Set Running"

Literature

- Operations manual
- General maintenance & installation guidelines
- Foundation drawing
- Parts manual

Acoustic Enclosed Unit

- Engine alternator assembly mounted on AVM with silencer & SS exhaust bellow
- Base rail with draw-out type fuel tank is provided with a drain plug, air vent
- Inlet and outlet connections, level indicator etc.
- Sub-base fuel tank with 990 litre capacity
- 24V dry batteries with connecting leads and terminals
- 90% gloss RAL 9003 white pure polyester powder coated, base in black colour

Generator Controller (DSE 7320 MKII)

Controller Type
DSE 7320 MKII for genset controller
Features
Compact and microprocessor based fully configurable control unit
4 line LCD display
The unique integrated DG set controller
Incorporate both engine & alternator parameter in one console
Fully configurable digital output
All parameters are settable and password protected
AMF ready
Remote start
Shutdown with Audio Visual Annunciation
Low oil pressure
High coolant temperature
Engine over speed
Engine under speed
High canopy temperature
Low fuel level
Under voltage
Over voltage
Over frequency
Under frequency
Low coolant level
High canopy temperature



Audio Visual Warning
Low oil pressure
High coolant temperature
Low battery voltage
Low fuel level
Display Parameters
Engine oil pressure
Coolant temperature
Battery voltage
Engine RPM
DG set running hours
Generator - volts
Phase
Neutral & phase
Phase generator current (Amps)
Power factor
kWh
kW

Optional Items

Electrical Systems

Alternator Space Heater / Copper Bus Bar / Earth Fault Relay / kWh meter / RTD / BTM Temperature Scanner

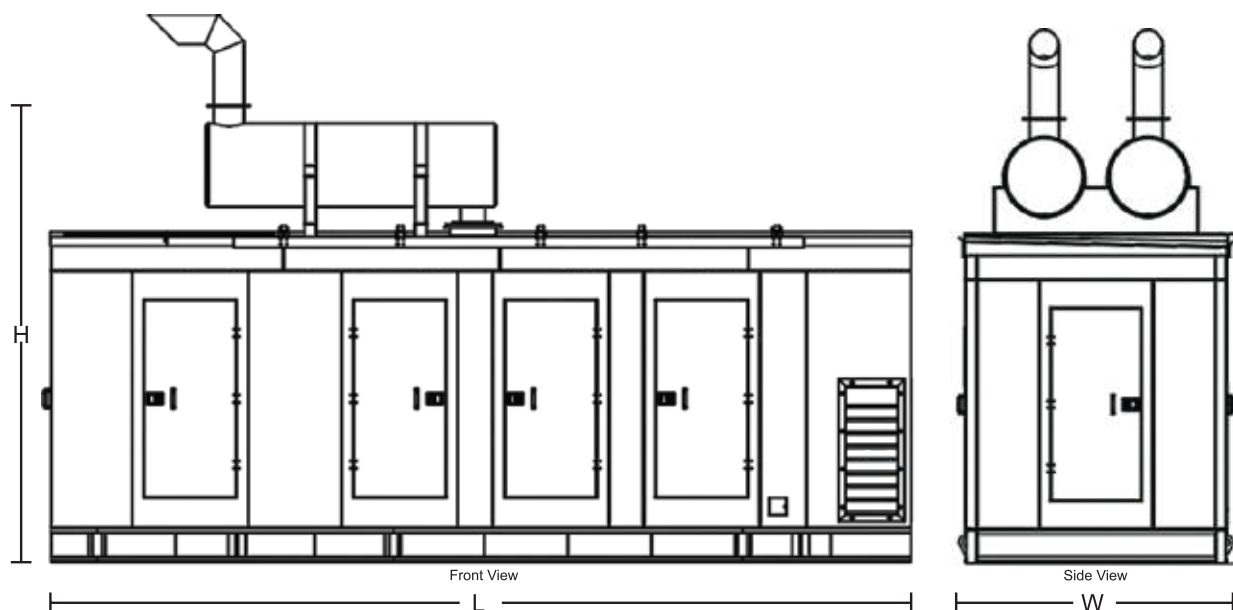
Synchronizing Controller

Deep-Sea / DIF

Open Unit (For Export)

Contact Greaves Team for more details

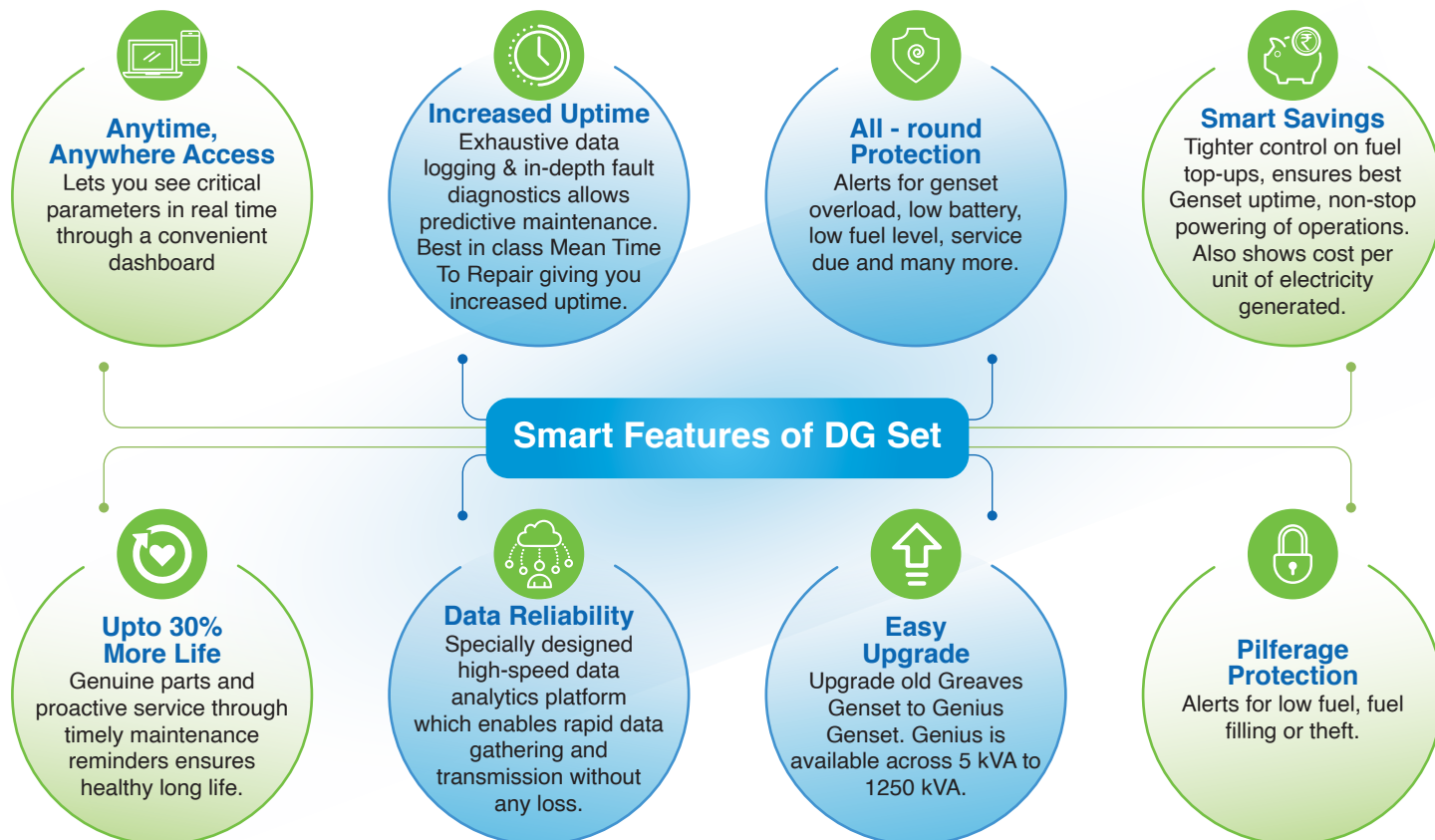




Set with Enclosure Dimensions & Weight

Model	Rating	L (mm)	W (mm)	H (mm)	Dry Weight (kg)
GPW-1010	1010	7400	2416*	3913*	10500

*Width including lifting hook. *Height upto silencer only.



Remote Monitoring System (RMS) Features

- Separate microcontroller
- Onboard memory with SD card
- Input and output for easy integration
- Battery backup
- RS 485 port
- Dual SIM support
- Surge and reverse power protection
- Wall and DIN mounting
- 3 LED indicator for GPS, GSM and data capture
- Secure by design and predefined access control
- Temper proof design
- Dynamic data collection
- Multi-protocol and controller support
- Cross-platform compatibility
- Real-time clock
- External GSM and GPRS antenna support
- Rapid data gathering



Powering Prestigious Client Projects



PRELIMINARY

PRIME POWER RATINGS: Prime power ratings apply to installations where utility power is unavailable or unreliable. At varying load, the number of generator set operating hours is unlimited.

A 10% overload capacity is available for one hour in twelve. Ratings are in accordance with ISO-8528/1, overload power in accordance with ISO-3046/1 and BS 5514. For limited running time and base load ratings, consult the factory. Obtain the technical information bulletin (TIB-10) on ratings guidelines for the complete ratings definitions.

Greaves Cotton - A Legacy of Excellence

- India's leading diversified engineering company with over 160 years of rich legacy
- Core competencies: Generator Sets, Pump Sets, Diesel/Petrol Engines and Farm Equipments
- Manufacturing 5 lakh engines annually
- Strong team of more than 300 R&D professionals
- Significant strengths: Technology, Value, Reach
- Extensive marketing and service network: Over 1200 sales & services centres across India
- Global footprint with local presence in SAARC, Africa and Middle-East



Non-stop Power



Driving Business



Enhancing Productivity



Engines of Growth

Power Generation Business

- Over 5 decades of experience in generator sets. 1 Lakh+ Gensets population in operation.
- New Genset manufacturing facility at Pune with annual capacity of more than 10000 Gensets
- Fuel-efficient, rugged and reliable
- Total solutions by single point of contact for engineering design, sales, service & spare parts
- ARAI approved testing facility equipped with sophisticated equipment is among the best in the industry and can test engines up to 2 MW
- State-of-the-art manufacturing facilities at Pune for multi-cylinder / higher HP engines and Gensets



Powering Missions



Supporting Large Infrastructure Projects

Esteemed Clientele



GREAVES
SINCE 1859

Greaves Cotton Limited

Auxiliary Power Business

Akurdi Chowk, Mumbai – Pune Highway, Chinchwad, Pune - 411019. Tel: +91-20 - 67308200 | 7030939506
Email: greavespower.sales@greavescotton.com | Website: www.greavescotton.com/business/greavespower
Call Center Number: 1800 266 0670

ISO 9001:2008
certified by



ISO 14001:2004
certified by



Corporate Office: Unit No. 701, 7th Floor, Tower 3, Equinox Business Park, LBS Marg, Kurla West, Mumbai - 400070.

Chennai: Greaves Cotton Ltd., Bharati Vilas, 2nd Floor, 26B Jawaharlal Nehru Salai
Ekkattuthangal Guindy Industrial Estate, Chennai - 600032.

Bengaluru: Survey No: 19/3, 4th Floor, Srinivasa Industrial Estate, Bikasipura Main road,
(Beside Metro Cash and Carry) Yelachenahalli, Bengaluru - 560062

Gurgaon: Tower-B, Unit-2, Near Dronacharya Metro Station, M.G Road, Gurgaon - 122002

Kolkata: Victoria Park, 09th Floor, Block – GN, Plot, 37/2, Sector – V, Salt Lake,
Kolkata- 700091, West Bengal, India

Greaves Channel Partner